

LJPZ  
STAR Rwy 15

5-1

15 Aug 06

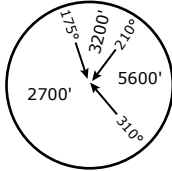
PORTOROZ, SLOVENIA  
Portoroz

PORTOROZ Tower  
129.325

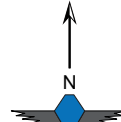
PORTOROZ Approach  
129.325

Trans Alt: **10500'**  
Trans Level: **By ATC**  
VAR: **1.0° E**

**ABLAT 1A (ABLAT ONE ALFA)**  
Arrival Rwy 15

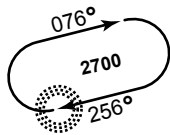


MSA  
**PZ Lctr**



Not to scale

Holding over  
PZ Lctr



PORTOROZ  
**388 PZ**  
N45 28.6 E013 46.9



Portoroz  
7'

2700  
5

354°

**ABLAT**  
N45 23.4 E013 37.2

P28  
11  
5000  
**ABLAT 1A**

354°

VRSAR  
**369 VRS**  
N45 12.6 E013 38.9

I/VAO-SI © ALL RIGHTS RESERVED

FOR FLIGHT SIMULATION PURPOSES ONLY