

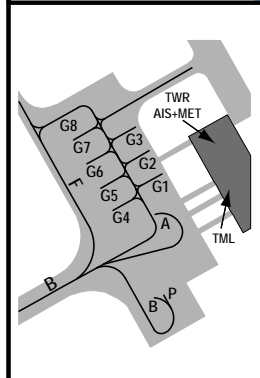
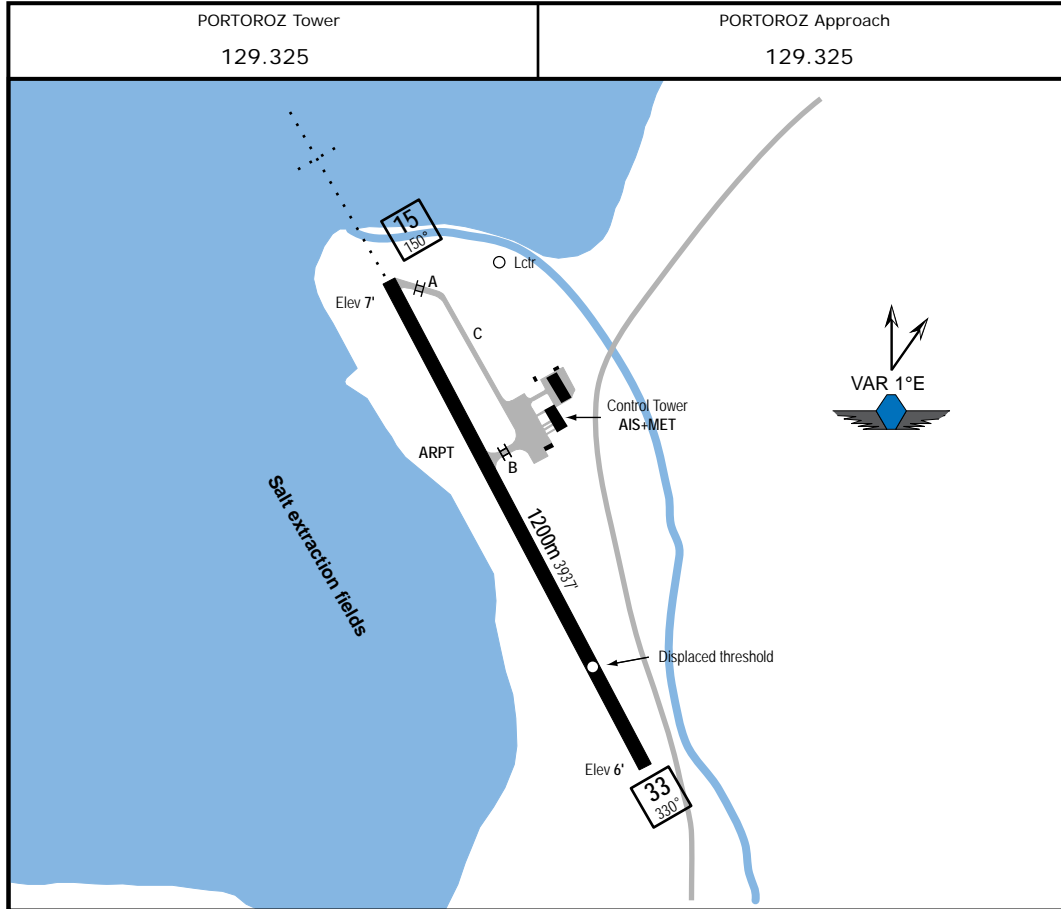
LJPZ
Apt Elev 7'
164.3°/22.1 from RON 114.2

1-1

PORTOROZ, SLOVENIA
Portoroz
N45 28.4 E013 36.9

20 Nov 08

N45 28.4 E013 36.9



PARKING POSITIONS

STAND	COORDINATES
A	N45 28.5 E013 36.9
B	N45 28.4 E013 37.0
P (Helicopter)	N35 28.4 E013 37.0

When PSN A is occupied, PSN G1 and G4 are not available; PSN G8 is used as taxilane.

PSN G1-G8: MAX wing span 12m;
MAX lenght 11m.
PSN A: MAX wing span 26 m.
PSN B: MAX wing span 29 m.
PSN P: MAX rotor diameter 15.6 m;
MAX length 18.7 m.

Threshold Rwy 33 not visible from Control Tower.

Birds in vicinity of airport.

ADDITIONAL THRESHOLD INFORMATION

RWY	M. BRG	COORDINATES
15	150°	N45 28.6 E013 36.7
33*	330°	N45 28.2 E013 37.1

*Coordinates for Rwy 33 are for displaced threshold.

RWY INFORMATION

RWY	HIRL HIALS PAPI-L (3.2°)	USABLE LENGTHS		Width
		Take-Off	LANDING BEYOND	
15	HIRL HIALS PAPI-L (3.2°)			98'
33	HIRL	3182'	970m	30m

TAKE-OFF

	LVP must be in Force	RCLM (DAY only) or RL	RCLM (DAY only) or RL	NIL (DAY only)
A		250m	400m	500m
B				
C				
D	NOT AUTHORIZED			

IVAO-SI © ALL RIGHTS RESERVED

FOR FLIGHT SIMULATION PURPOSES ONLY