

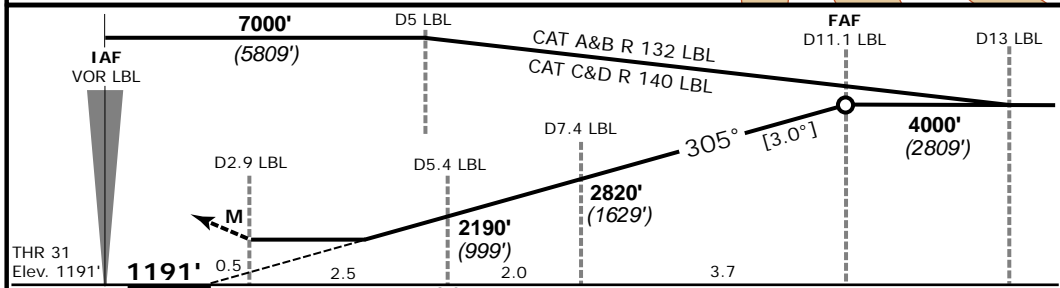
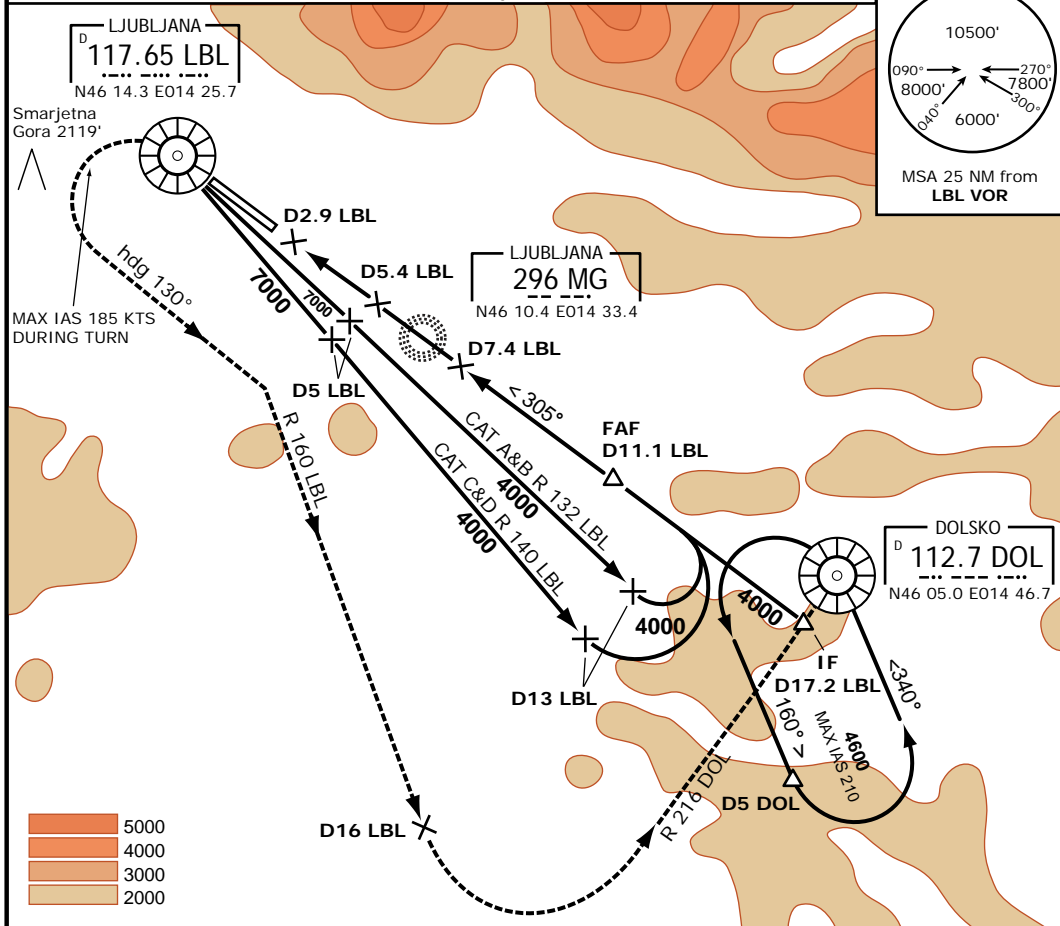
LJLJ
VOR/DME RWY 31

3-2
 20 Nov 08

LJUBLJANA, SLOVENIA
 Ljubljana

LJUBLJANA Radar 135.275 136.000		LJUBLJANA Tower 118.000 118.750		<p>MSA 25 NM from DOL VOR</p>
VOR LBL 117.65	Final App Crs 305°	Minimum Alt D11.1 LBL 4000' (2809')	Apt Elev 1273' RWY 1191'	

Missed approach:
 Climb **straight ahead**, at **LBL turn left** (max IAS 185 kts) **heading 130°**, intercept **R-160** from **LBL**, at **D16 LBL turn left**, intercept **R-216** to **DOL**. Climb and maintain **6000'**.



RECOMMENDED PROFILE - Descent gradient 5.2% [3.0°]						<p>HIALS PAPI PAPI</p>
LBL DME	10.0	9.0	8.0	7.0	6.0	
Altitude	3640	3320	3010	2690	2380	2060
OCA (H)						
		A	B	C*	D	
Straight-in Approach	Alt	1620 (429)	1620 (429)	1760 (569)	1760 (569)	
Circling	Alt	1790 (517)	1970 (697)	2610 (1337)	2710 (1437)	
CIRCLE-TO-LAND		Gnd speed [Kts]				
Circling NorthEast of aerodrome NOT AUTHORIZED		70 90 100 120 140 160 180				
		Descent gradient [5.2%]				
		377 484 538 646 753 861 969				

IVAO-SI ©. ALL RIGHTS RESERVED

FOR FLIGHT SIMULATION PURPOSES ONLY