

LJMB ILS or LOCATOR RWY 33

3-1

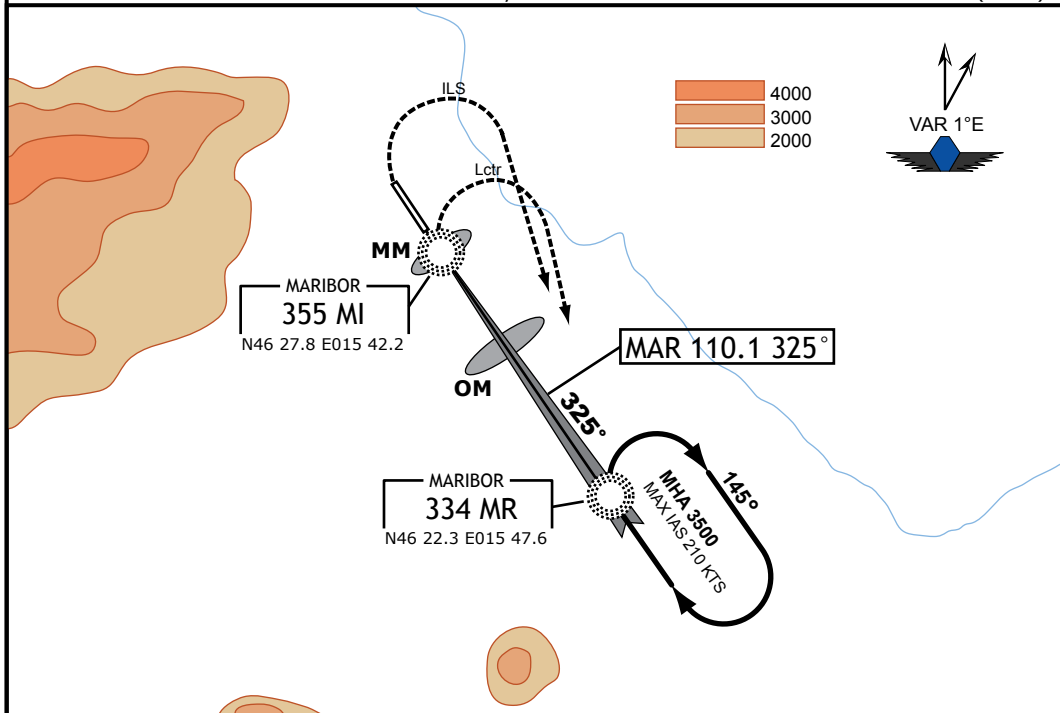
MARIBOR, SLOVENIA Maribor

20 Dec 07

MARIBOR Tower 119.200		MARIBOR Approach 119.200			<p>MSA 25 NM from MR Lctr</p>
LOC MAR 110.1	Final App Crs 325°	GS OM 1890' (1034')	ILS DA(H) 1056' (200')	Apt Elev 876' RWY 856'	
Lctr MR 334		Minimum Alt MR Lctr 3120' (2264')	LOCATOR MDA(H) 1200' (344')		

Missed Approach:
ILS: Climb **straight ahead to 1150'**, then turn **right (max IAS 185 kts)** to **MR Lctr** climbing to **3500'** and **hold**.
Lctr: At **LMM** turn **right (max IAS 185 kts)** to **MR Lctr** climbing to **3500'** and hold.

Alt Set: hPa Trans Level: By ATC Trans Alt: 10500' (9644')



RWY 33 OCA(H)	LMM	OM	MR Lctr	3500' (2644')
ILS A: 994' (138')	GS 1073' (217')	GS 1890' (1034')		145°
ILS B: 1004' (148')				325°
ILS C: 1014' (158')				
ILS D: 1027' (171')				
GS out: 1148' (292')				
Lctr: 1198' (342')				
RWY Elev 856'				
	0.5	2.6	3.1	4.1
				7.2

Gnd speed [Kts]	70	90	100	120	140	160	HIALS	CIRCLE-TO-LAND
Descent Angle [3°] or LOC or Lctr descent gradient [5.2%]	377	484	538	646	753	861	PAPI	

STRAIGHT-IN LANDING RWY 33						Circling SouthWest of aerodrome NOT AUTHORIZED		
ILS		LOC (GS out)		LOCATOR		Max Kts	MDA(H)	VIS
DA(H)	ALS out	MDA(H)	ALS out	MDA(H)	ALS out			
A						100	1280' (404')	1500m
B						135	1570' (694')	1600m
C	RVR 550m	RVR 550m	RVR 800m	Not Auth	RVR 1000m	180	1830' (954')	2400m
D			RVR 1200m		RVR 1800m	205	2000' (1124')	3600m

IVAO-SI © ALL RIGHTS RESERVED

FOR FLIGHT SIMULATION PURPOSES ONLY