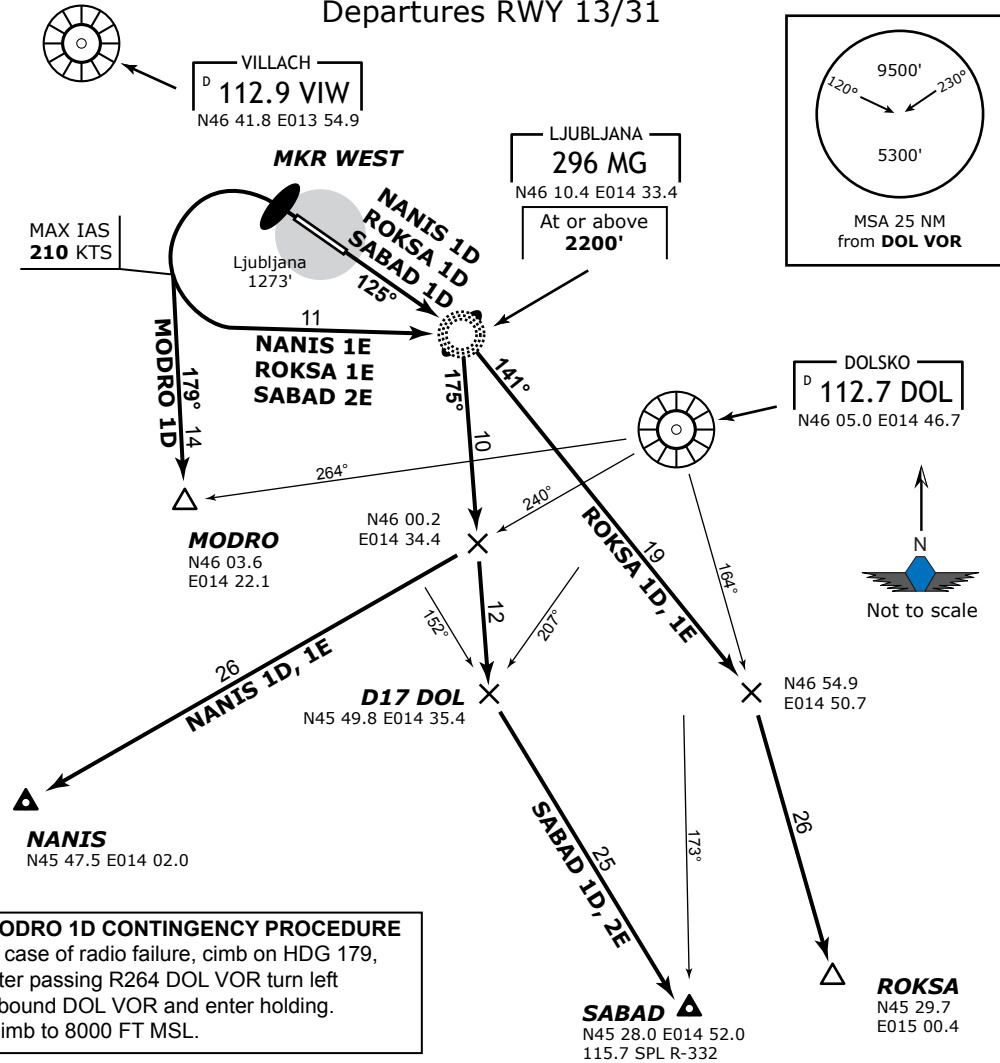


|                                    |                                    |  |
|------------------------------------|------------------------------------|--|
| LJUBLJANA Tower<br>118.000 118.750 | LJUBLJANA Radar<br>135.275 136.000 | Trans Alt: <b>10500'</b><br>Trans Level: <b>By ATC</b><br>VAR: <b>1.0° E</b> |
|------------------------------------|------------------------------------|--|

**MODRO 1D (MODRO ONE DELTA),  
NANIS 1D (NANIS ONE DELTA), NANIS 1E (NANIS ONE ECHO),  
ROKSA 1D (ROKSA ONE DELTA), ROKSA 1E (ROKSA ONE ECHO),  
SABAD 1D (SABAD ONE DELTA), SABAD 2E (SABAD TWO ECHO)**  
Departures RWY 13/31



| SID             | Rwy       | Routing  | Altitude Restrict.                             |
|-----------------|-----------|--|--|
| <b>MODRO 1D</b> | <b>31</b> | To MKR West, turn LEFT heading 179, climbing to 6000 FT MSL MAX IAS 210 KTS during turn and up to 6000 FT to MODRO.                  | Procedure Design<br>Climb Gradient <b>4.9%</b> |
| <b>NANIS 1D</b> | <b>13</b> | To MG Lctr, turn RIGHT, 175° bearing, intercept DOL R-240 to Nanis Int.  | Cross MG Lctr at or above <b>2200'</b> .       |
| <b>NANIS 1E</b> | <b>31</b> | To MKR West, turn LEFT (MAX IAS 215 KTS) to MG Lctr, turn RIGHT, 175° bearing, intercept DOL R-240 to Nanis Int.                     |  |
| <b>ROKSA 1D</b> | <b>13</b> | To MG Lctr, turn RIGHT, 141° bearing, intercept DOL R-164 to Roksa Int.  |  |
| <b>ROKSA 1E</b> | <b>31</b> | To MKR West, turn LEFT (MAX IAS 215 KTS) to MG Lctr, turn RIGHT, 141° bearing, intercept DOL R-164 to Roksa Int.                     |  |
| <b>SABAD 1D</b> | <b>13</b> | To MG Lctr, turn RIGHT, 175° bearing, intercept VIW R-152 (SPL R-332 inbound) to Sabad Int.  |  |
| <b>SABAD 2E</b> | <b>31</b> | To MKR West, turn LEFT (MAX IAS 215 KTS) to MG Lctr, turn RIGHT, 175° bearing, intercept VIW R-152 (SPL R-332 inbound) to Sabad Int. |  |

IVAO-SI © ALL RIGHTS RESERVED