

LJLJ
ILS RWY 31

3-1

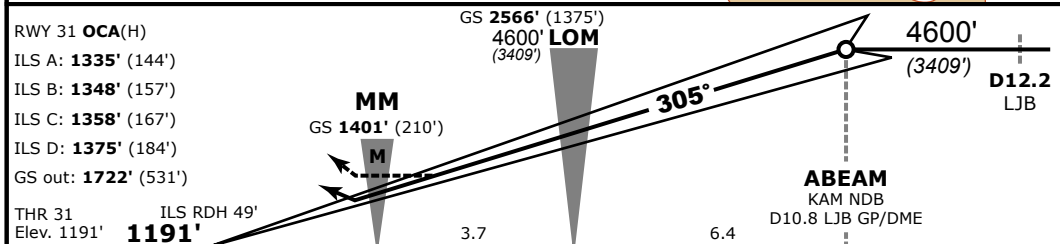
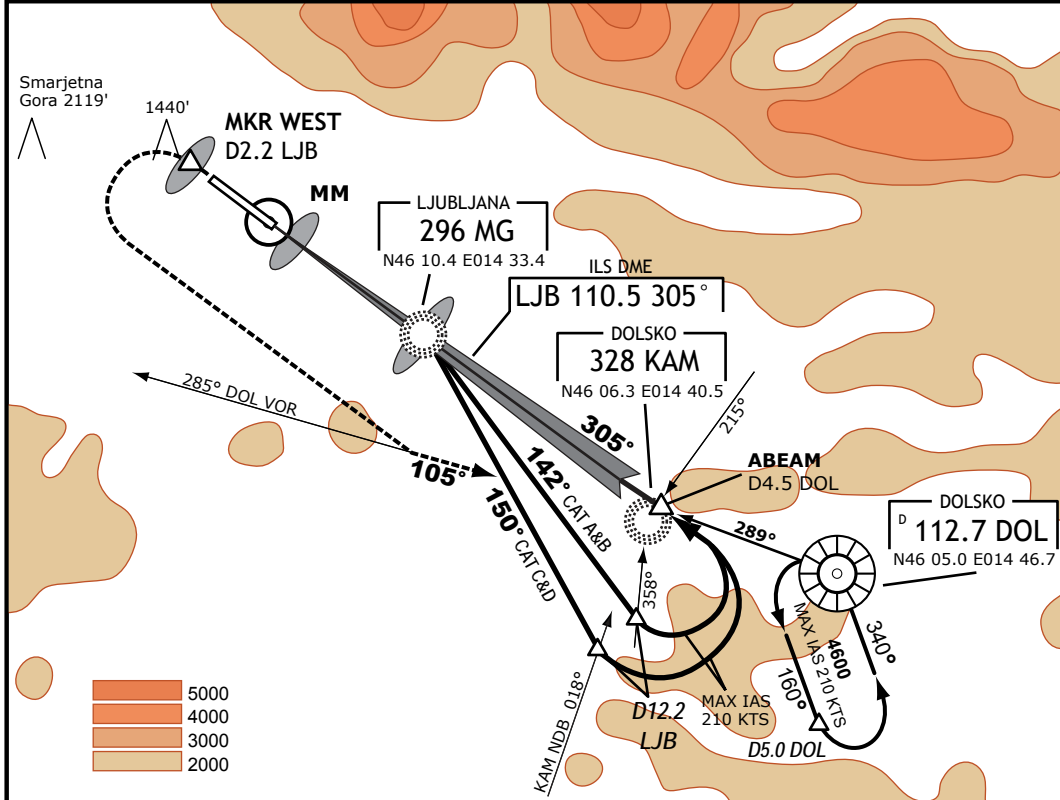
LJUBLJANA, SLOVENIA
Ljubljana

20 Dec 07

LJUBLJANA Radar 135.275 136.000		LJUBLJANA Tower 118.000 118.750			<p>MSA 25 NM from DOL VOR</p>
LOC LJB 110.5	Final App Crs 305°	GS LOM 2566' (1375')	ILS DA(H) 1401' (210')	Apt Elev 1273' RWY 1191'	

Missed Approach:
Climb **straight ahead** to **MKR WEST/D2.2 LJB**, then turn **left** to intercept and follow **R-285** inbound DOL VOR climbing to **4600'** and **hold**. Climb to 2500' prior to level acceleration.

VAR 1°E Alt Set: hPa Trans Level: By ATC Trans Alt: 10500' (9309')



RWY 31 OCA(H)		GS 2566' (1375') 4600' LOM (3409')				4600' (3409')	D12.2 LJB
ILS A:	1335' (144')						
ILS B:	1348' (157')						
ILS C:	1358' (167')						
ILS D:	1375' (184')						
GS out:	1722' (531')						
THR 31 Elev. 1191'	ILS RDH 49' 1191'	3.7		6.4			

OCA (H)		A	B	C*	D	<p>CAT IIIB (RVR 125m) Operations approved.</p>
Straight-in Approach	CAT II Radio ALT	1240 (49)	1253 (62)	1266 (75)	1280 (89)	
	CAT I Press. ALT	1335 (144)	1348 (147)	1358 (167)	1375 (184)	
GP. INOP		1722 (531)				
Circling		1740 (467)	1970 (697)	2610 (1337)	2710 (1437)	

* Alternate Circling minima for CAT C MAX IAS 160 KTS: 2040' (767')

<p>CIRCLE-TO-LAND</p> <p>Circling NorthEast of aerodrome NOT AUTHORIZED</p>	MKR WEST D2.2 LJB							
	Gnd speed [Kts]	70	90	100	120	140	160	180
	ILS GS [3°] or LOC descent gradient [5.2%]	377	484	538	646	753	861	969

IVAO-SI ©. ALL RIGHTS RESERVED

FOR FLIGHT SIMULATION PURPOSES ONLY