

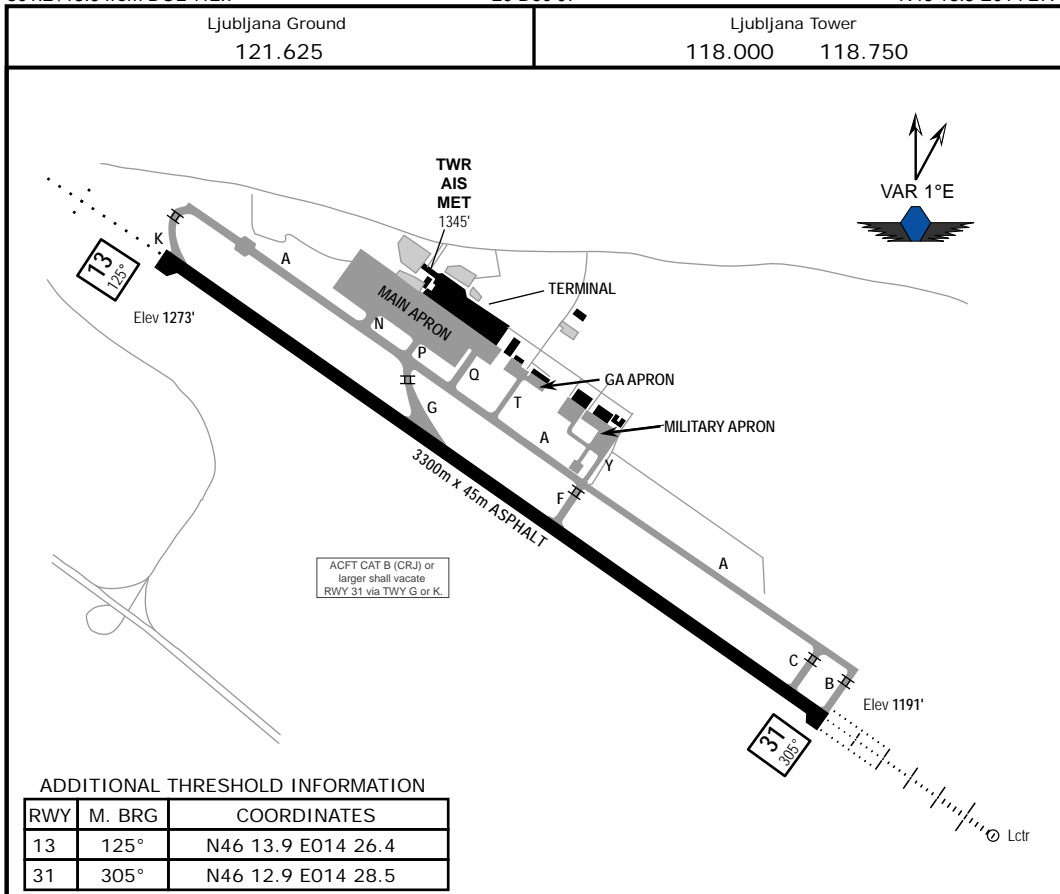
LJU
 Apt Elev 1273'
 301.2°/15.9 from DOL 112.7

1-1

LJUBLJANA, SLOVENIA
 Ljubljana
 N46 13.5 E014 27.4

Ljubljana Ground
 121.625

Ljubljana Tower
 118.000 118.750



ADDITIONAL THRESHOLD INFORMATION

RWY	M. BRG	COORDINATES
13	125°	N46 13.9 E014 26.4
31	305°	N46 12.9 E014 28.5

TAXIING RESTRICTIONS

1. Vacating RWY 31 via TWY F reserved for ACFT CAT-A (Cessna).
2. TWY speed limitation 25 KTS, apron speed limit 8 KTS.
3. Pushback available at gates 1 through 12.
4. Taxiing on TWY P for ACFT larger than A320 is prohibited.

OPERATIONAL PROCEDURES

1. Only startup and taxi shall be requested from ATS for IFR traffic. ATC clearance will be issued when ready, usually during taxi.

RWY INFORMATION

RWY	HIRL (60m) CL (15m) HIALS PAPI-L (3.0°)	USABLE LENGTHS			Width
		LANDING BEYOND			
		Glide Slope			
13	HIRL (60m) CL (15m) HIALS PAPI-L (3.0°)				148'
31	HIRL 1* CL 2* HIALS TDZ PAPI (3.0°) HST-G RVR	9777'	2980m		45m

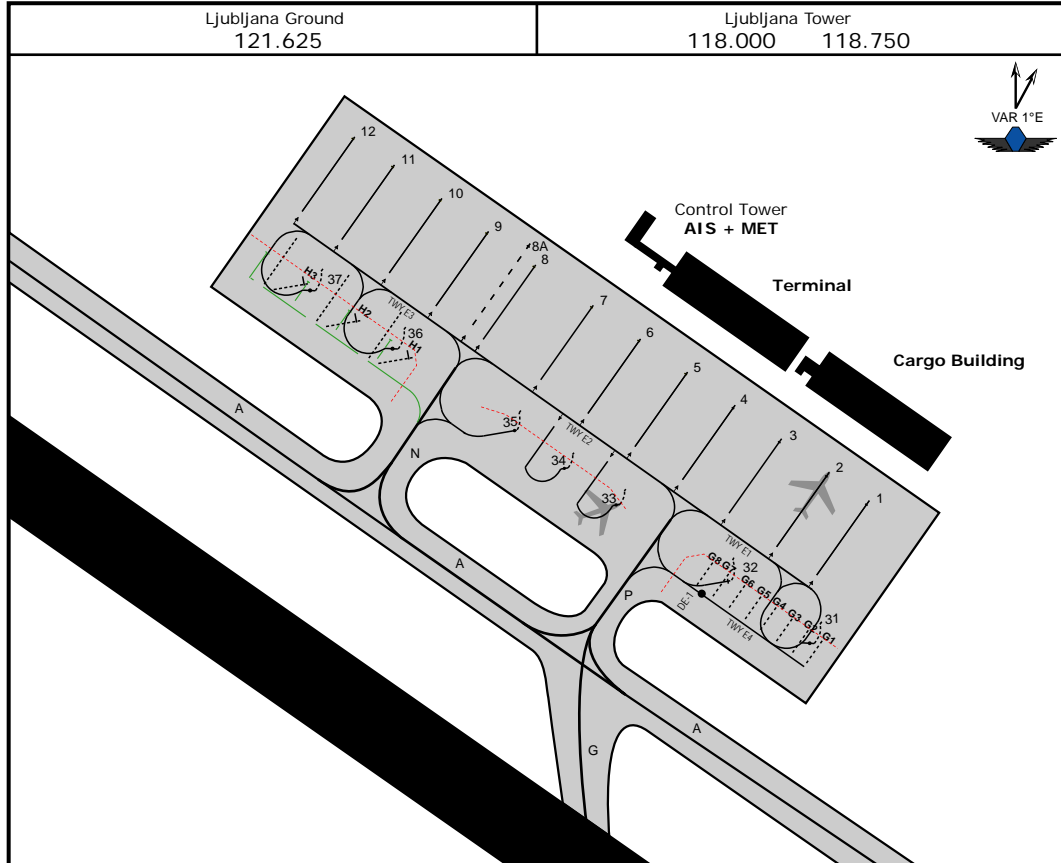
- 1* Spacing 60m
- 2* Spacing 15m

TAKE-OFF (All Rwy's)

	LVP must be in Force					NIL (DAY only)
	Approved Operators HIRL, CL and mult. RVR req.	RL, CL and mult. RVR req.	RL and CL	RCLM (DAY only) or RL	RCLM (DAY only) or RL	
A						
B	125m	150m	200m	250m	400m	500m
C						
D	150m	200m	250m	300m		

IVAO-SI © ALL RIGHTS RESERVED

FOR FLIGHT SIMULATION PURPOSES ONLY



INS Coordinates

PSN Number	Coordinates	PSN Number	Coordinates
1	N46 13.81 E014 27.38	10	N46 13.94 E014 27.12
2	N46 13.82 E014 27.36	11	N46 13.96 E014 27.09
3	N46 13.84 E014 27.33	12	N46 13.97 E014 27.07
4	N46 13.85 E014 27.30	31	N46 13.76 E014 27.34
5	N46 13.87 E014 27.27	32	N46 13.78 E014 27.29
6	N46 13.88 E014 27.24	33	N46 13.81 E014 27.22
7	N46 13.89 E014 27.21	34	N46 13.83 E014 27.19
8	N46 13.91 E014 27.18	35	N46 13.85 E014 27.16
8A	N46 13.92 E014 27.18	36	N46 13.88 E014 27.09
9	N46 13.93 E014 27.15	37	N46 13.91 E014 27.04

PSN Number	PSN for
2-11, 32, DE-1	MAX CAT-C ACFT
31, 36, 37	MAX B737-900, A320
1, 12	MAX CAT-B ACFT
35	MAX ATR-72, CAT-B ACFT
33, 34	MAX wing span 28.5M, MAX turning radius 12.81M
8A	CAT-D ACFT

TAXI NOTES:

- PSN 1, 2, 3, 4, 5, 6, 7, 8, 8A, 9, 10, 11, 12: taxi-in / push-back, PSN 31-37, including DE-1: self maneuvering, PSN G1-G8: self maneuvering.
- Apron TWY E1, TWY E2, TWY E3 and TWY E4 restricted to AFCT with MAX wing span 36M. In case of parked ACFT on PSN G1-G8, TWY E4 restricted to MAX wing span 12.2M.
- PSN DE-1 is provided for winter conditions (aircraft ground de/anti icing operations).
- PSN H1, H2 and H3: Helicopter parking space; self maneuvering; MAX AS 532 AL (Cougar)
- Helicopter parking PSNs used in combination with other ACFT. Caution advised during hovering and taxiing.

PUSHBACK NOTES:

- STD P/B from PSN 1 - 4: Cockpit facing WESTERLY.
- STD P/B from PSN 5 - 12: Cockpit facing EASTERLY.

LJLJ
ILS RWY 31

3-1

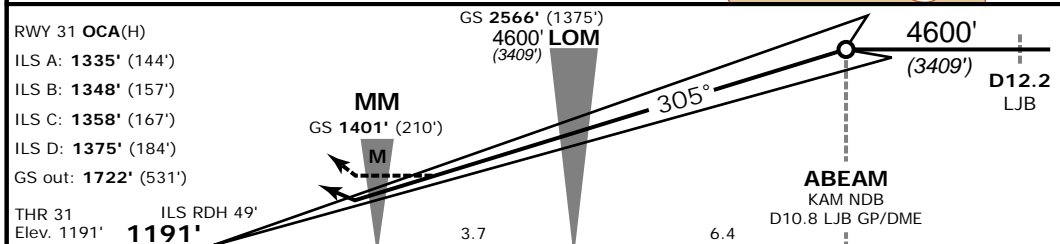
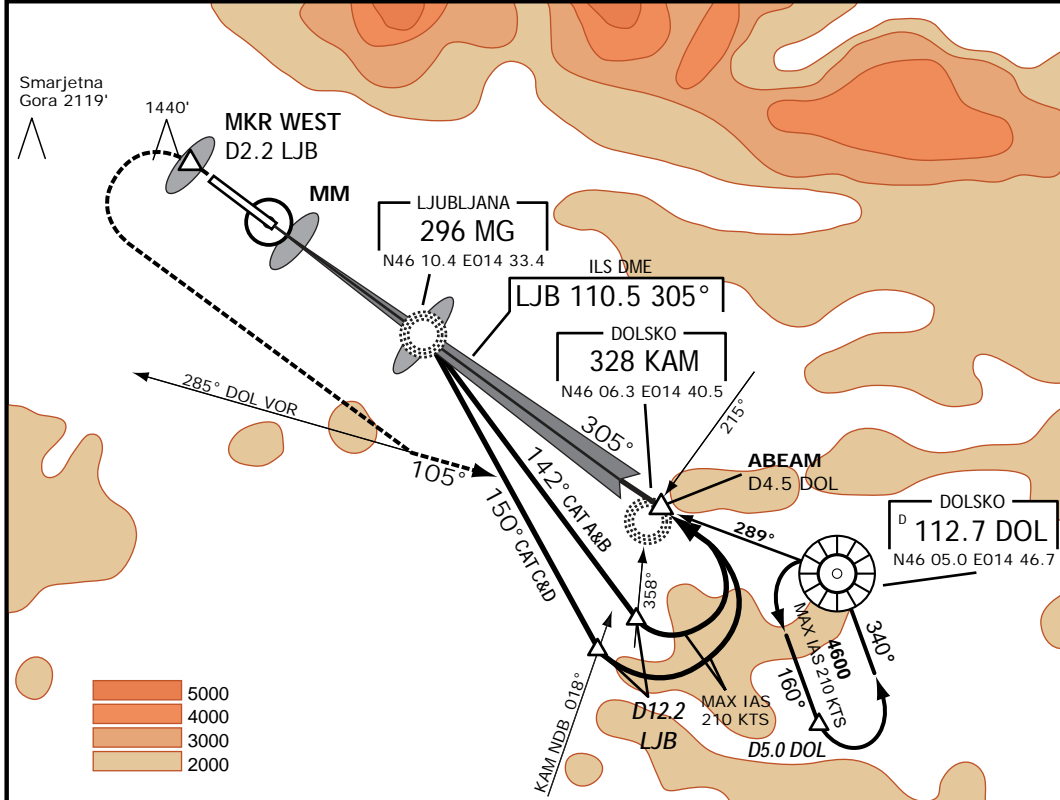
LJUBLJANA, SLOVENIA
 Ljubljana

20 Dec 07

LJUBLJANA Radar 135.275 136.000		LJUBLJANA Tower 118.000 118.750			<p>MSA 25 NM from DOL VOR</p>
LOC LJB 110.5	Final App Crs 305°	GS LOM 2566' (1375')	ILS DA(H) 1401' (210')	Apt Elev 1273' RWY 1191'	

Missed Approach:
 Climb **straight ahead** to **MKR WEST/D2.2 LJB**, then turn **left** to intercept and follow **R-285** inbound DOL VOR climbing to **4600'** and **hold**. Climb to 2500' prior to level acceleration.

VAR 1°E Alt Set: hPa Trans Level: By ATC Trans Alt: 10500' (9309')



OCA (H)		A	B	C*	D	<p>CAT IIIB (RVR 125m) Operations approved.</p>
Straight-in Approach	CAT II Radio ALT	1240 (49)	1253 (62)	1266 (75)	1280 (89)	
	CAT I Press. ALT	1335 (144)	1348 (147)	1358 (167)	1375 (184)	
GP. INOP		1722 (531)				
Circling		1740 (467)	1970 (697)	2610 (1337)	2710 (1437)	

* Alternate Circling minima for CAT C MAX IAS 160 KTS: 2040' (767')

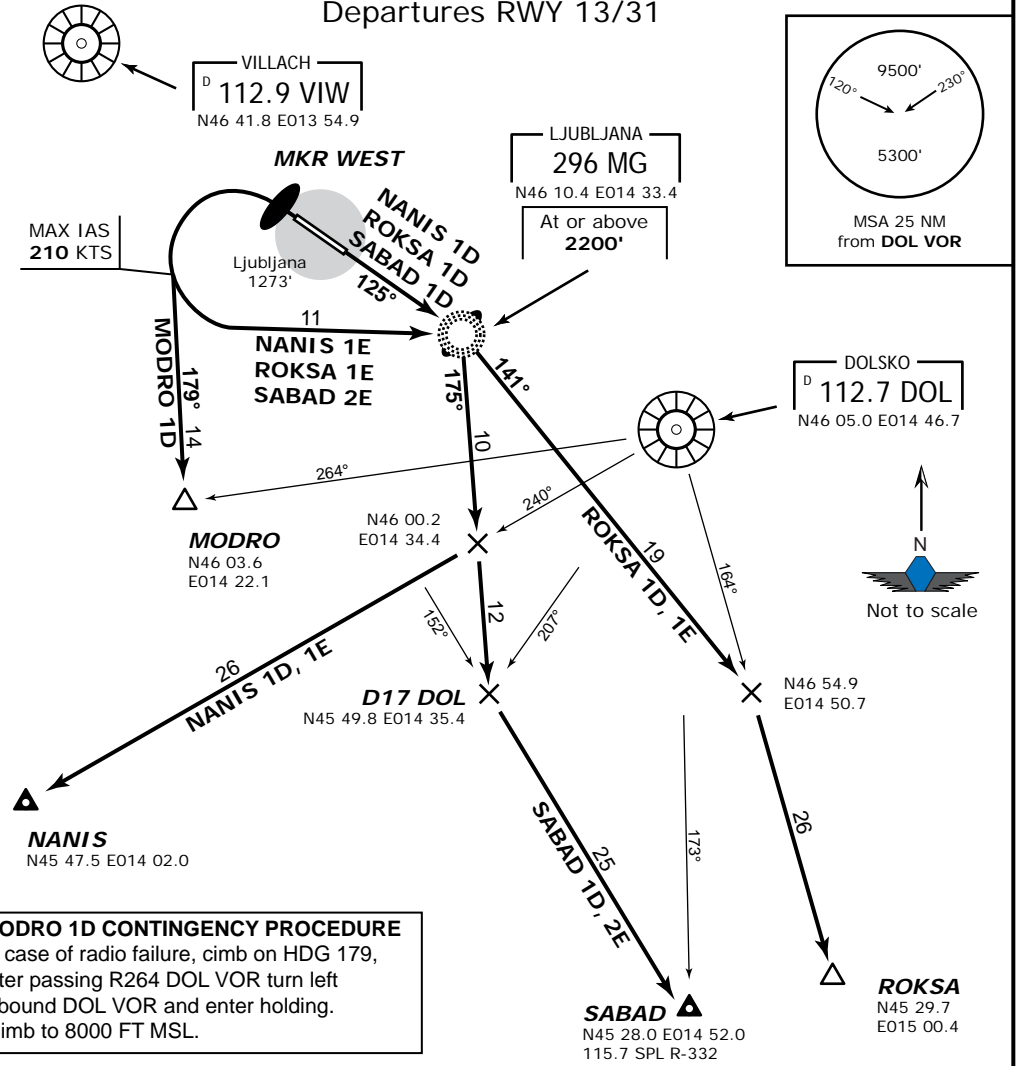
CIRCLE-TO-LAND Circling NorthEast of aerodrome NOT AUTHORIZED	MKR WEST D2.2 LJB						
	↑						
	Gnd speed [Kts]	70	90	100	120	140	160
ILS GS [3°] or LOC descent gradient [5.2%]	377	484	538	646	753	861	969

IVAO-SI ©. ALL RIGHTS RESERVED

FOR FLIGHT SIMULATION PURPOSES ONLY

LJUBLJANA Tower 118.000 118.750	LJUBLJANA Radar 135.275 136.000	Trans Alt: 10500' Trans Level: By ATC VAR: 1.0° E
------------------------------------	------------------------------------	---

MODRO 1D (MODRO ONE DELTA),
NANIS 1D (NANIS ONE DELTA), NANIS 1E (NANIS ONE ECHO),
ROKSA 1D (ROKSA ONE DELTA), ROKSA 1E (ROKSA ONE ECHO),
SABAD 1D (SABAD ONE DELTA), SABAD 2E (SABAD TWO ECHO)
Departures RWY 13/31

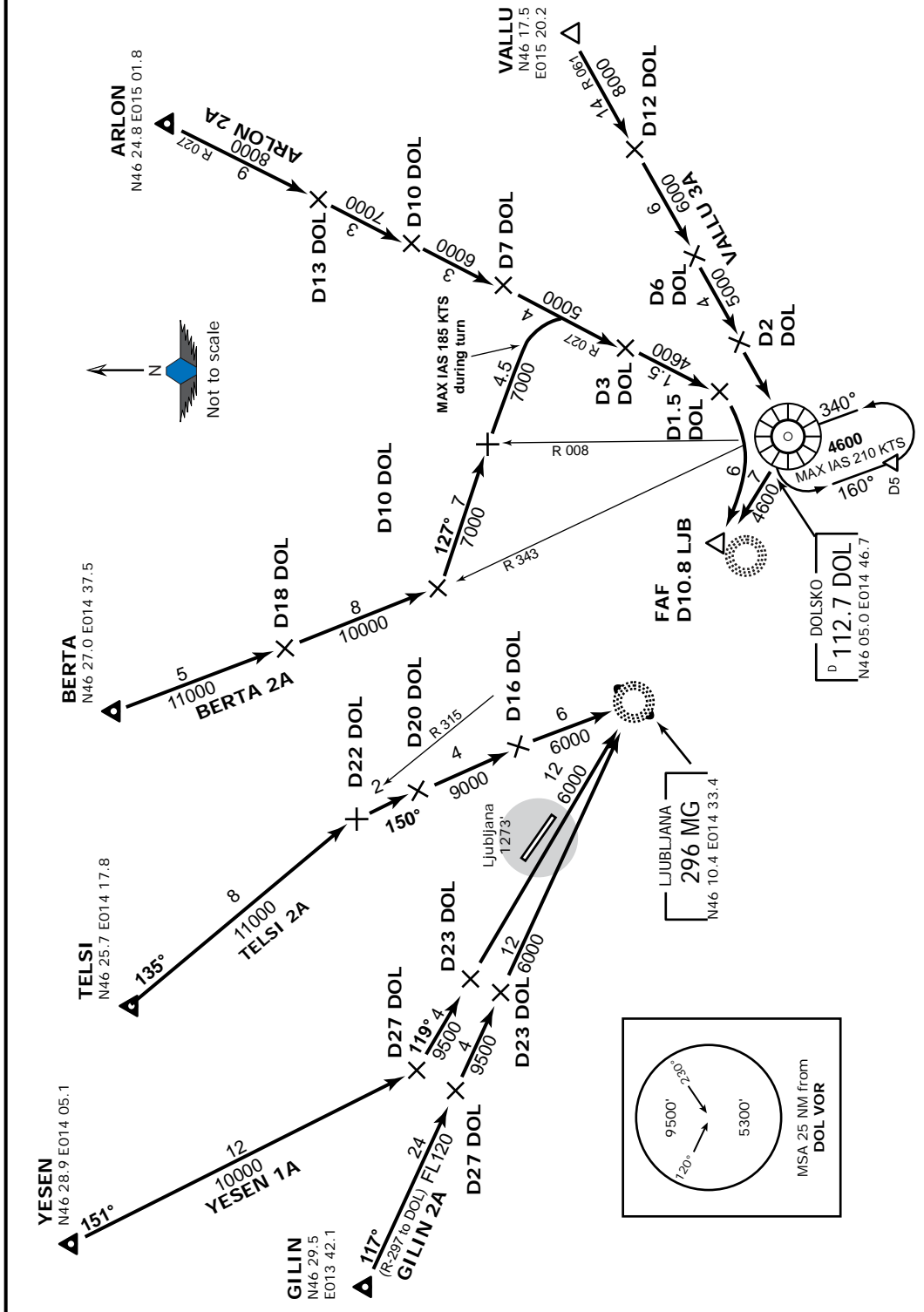


SID	Rwy	Routing	Altitude Restrict.
MODRO 1D	31	To MKR West, turn LEFT heading 179, climbing to 6000 FT MSL MAX IAS 210 KTS during turn and up to 6000 FT to MODRO.	Procedure Design Climb Gradient 4.9%
NANIS 1D	13	To MG Lctr, turn RIGHT, 175° bearing, intercept DOL R-240 to Nanis Int.	Cross MG Lctr at or above 2200'.
NANIS 1E	31	To MKR West, turn LEFT (MAX IAS 215 KTS) to MG Lctr, turn RIGHT, 175° bearing, intercept DOL R-240 to Nanis Int.	
ROKSA 1D	13	To MG Lctr, turn RIGHT, 141° bearing, intercept DOL R-164 to Roksa Int.	
ROKSA 1E	31	To MKR West, turn LEFT (MAX IAS 215 KTS) to MG Lctr, turn RIGHT, 141° bearing, intercept DOL R-164 to Roksa Int.	
SABAD 1D	13	To MG Lctr, turn RIGHT, 175° bearing, intercept VIW R-152 (SPL R-332 inbound) to Sabad Int.	
SABAD 2E	31	To MKR West, turn LEFT (MAX IAS 215 KTS) to MG Lctr, turn RIGHT, 175° bearing, intercept VIW R-152 (SPL R-332 inbound) to Sabad Int.	

IVAO-SI © ALL RIGHTS RESERVED

LJUBLJANA Tower 118.000 118.750	LJUBLJANA Radar 135.275 136.000	Trans Alt: 10500' Trans Level: By ATC VAR: 1.0° E
------------------------------------	------------------------------------	---

ARLON 2A (ARLON TWO ALFA), BERTA 2A (BERTA TWO ALFA),
GILIN 2A (GILIN TWO ALFA), TELSİ 2A (TELSİ TWO ALFA),
VALLU 3A (VALLU THREE ALFA), YESEN 1A (YESEN ONE ALFA)
Arrivals RWY 31



LJMB ILS or LOCATOR RWY 33

3-1

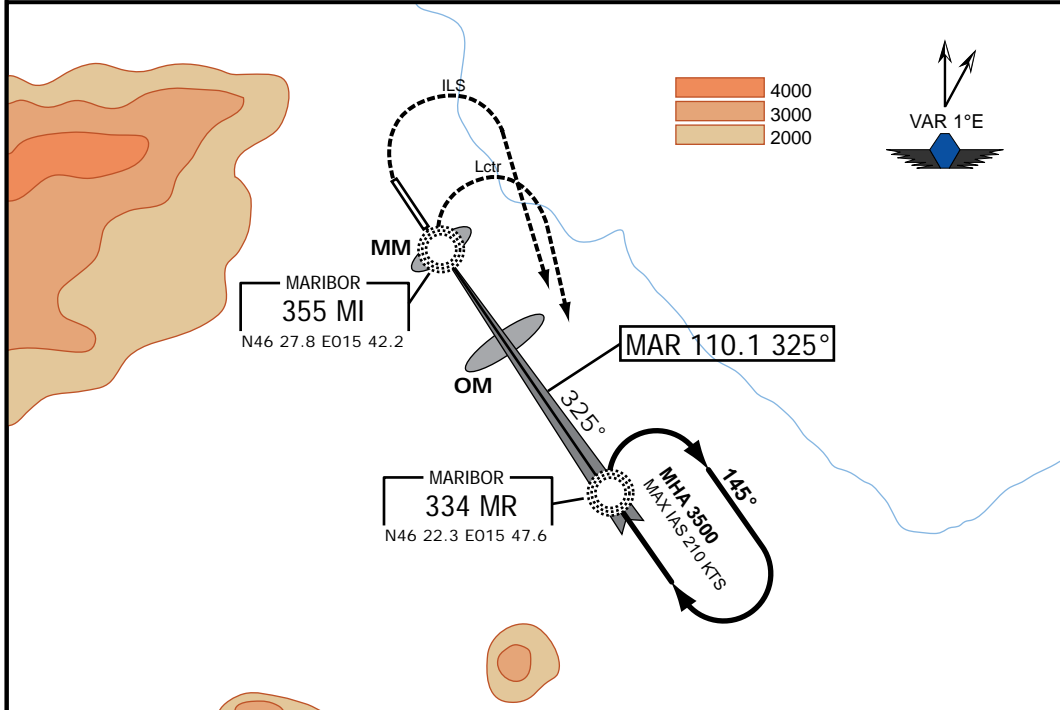
MARIBOR, SLOVENIA Maribor

20 Dec 07

MARIBOR Tower 119.200		MARIBOR Approach 119.200			<p>MSA 25 NM from MR Lctr</p>
LOC MAR 110.1	Final App Crs 325°	GS OM 1890' (1034')	ILS DA(H) 1056' (200')	Apt Elev 876' RWY 856'	
Lctr MR 334		Minimum Alt MR Lctr 3120' (2264')	LOCATOR MDA(H) 1200' (344')		

Missed Approach:
ILS: Climb **straight ahead** to **1150'**, then turn **right (max IAS 185 kts)** to **MR Lctr** climbing to **3500'** and **hold**.
Lctr: At **LMM** turn **right (max IAS 185 kts)** to **MR Lctr** climbing to **3500'** and **hold**.

Alt Set: hPa Trans Level: By ATC Trans Alt: 10500' (9644')



RWY 33 OCA(H)	LMM	OM	MR Lctr	145° →	3500' (2644')	1 Min
ILS A: 994' (138')	GS 1073' (217')	GS 1890' (1034')				
ILS B: 1004' (148')						
ILS C: 1014' (158')						
ILS D: 1027' (171')						
GS out: 1148' (292')						
Lctr: 1198' (342')						
RWY Elev 856'	TCH 49'	LOC 1890' (1034')				
	0.5	2.6	3.1	4.1	7.2	

Gnd speed [Kts]	70	90	100	120	140	160	HIALS	CIRCLE-TO-LAND
Descent Angle [3°] or LOC or Lctr descent gradient [5.2%]	377	484	538	646	753	861	PAPI	

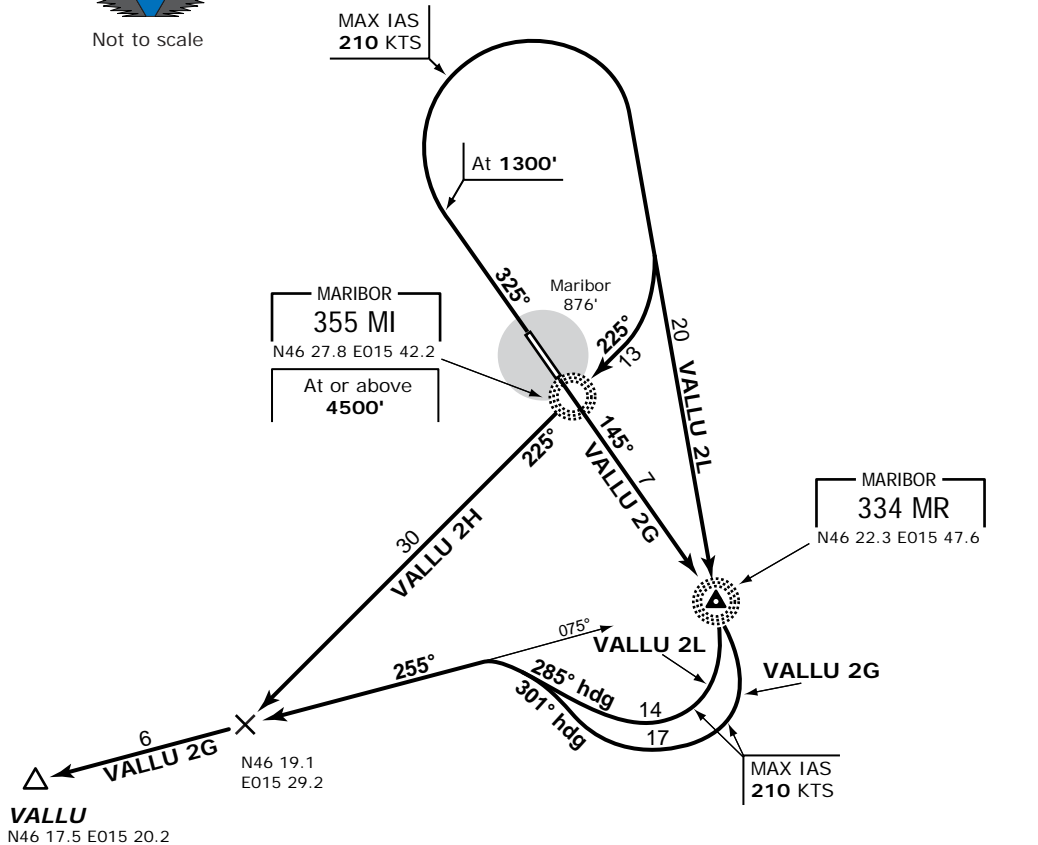
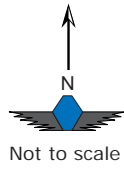
STRAIGHT-IN LANDING RWY 33							Circling SouthWest of aerodrome NOT AUTHORIZED		
ILS		LOC (GS out)		LOCATOR			Max Kts	MDA(H)	VIS
DA(H)	1056' (200')	MDA(H)	1150' (294')	MDA(H)	1200' (344')	ALS out			
A							100	1280' (404')	1500m
B							135	1570' (694')	1600m
C	RVR 550m	RVR 550m	RVR 800m	Not Auth	RVR 1000m	RVR 1600m	180	1830' (954')	2400m
D			RVR 1200m		RVR 1800m	RVR 1400m	205	2000' (1124')	3600m

IVAO-SI © ALL RIGHTS RESERVED

FOR FLIGHT SIMULATION PURPOSES ONLY

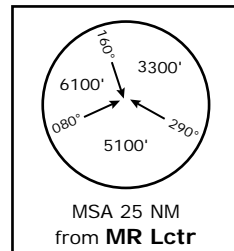
MARIBOR Tower 119.200	MARIBOR Approach 119.200	Trans Alt: 10500' Trans Level: By ATC VAR: 1.0° E
--------------------------	-----------------------------	--

VALLU 2G (VALLU TWO GOLF), VALLU 2H (VALLU TWO HOTEL),
VALLU 2L (VALLU TWO LIMA)
Departures RWY 33/15



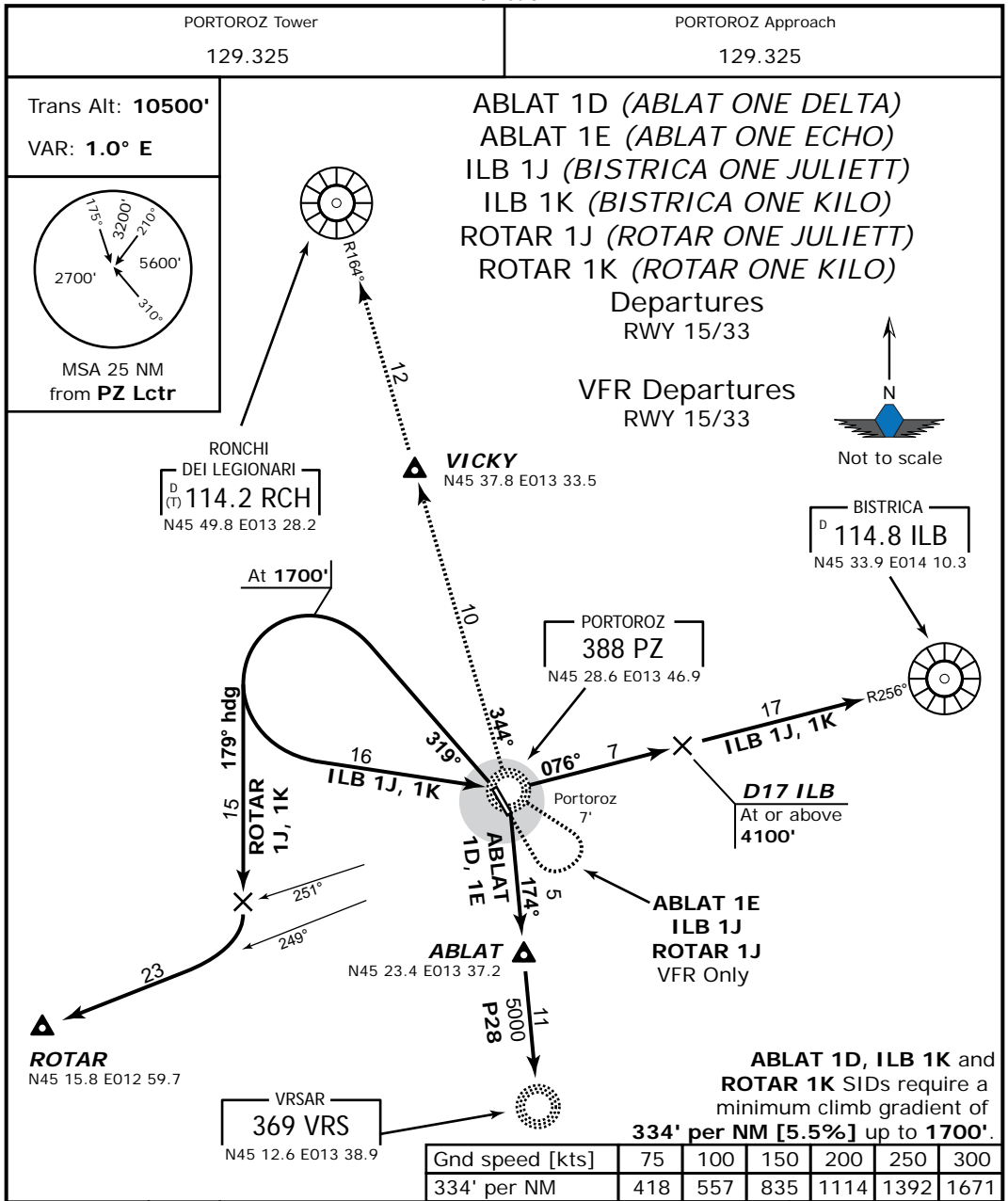
VALLU 2H and VALLU 2L SIDs
require a minimum climb gradient of
304' per NM [5%] up to **1800'**.

Gnd speed [kts]	75	100	150	200	250	300
334' per NM	380	506	760	1013	1266	1519



SID	Rwy	Routing	Altitude Restrict.
VALLU 2G	15	To MR Lctr, turn RIGHT (MAX IAS 210 KTS), 301° heading, intercept 255° bearing from MR Lctr to Vallu Int.	Cross MR Lctr at or above 3200' .
VALLU 2H	33	Climb straight ahead to 1300' , turn RIGHT (MAX IAS 210 KTS), intercept 225° bearing to MI Lctr, intercept 225° bearing from MR Lctr to Vallu Int.	Cross MI Lctr at or above 4500' .
VALLU 2L		Climb straight ahead to 1300' , turn RIGHT (MAX IAS 210 KTS) to MR Lctr, then turn RIGHT (MAX IAS 210 KTS), 285° heading, intercept 255° bearing from MR Lctr to Vallu Int.	Cross MR Lctr at or above 5500' .

IVAO-SI © ALL RIGHTS RESERVED



SID	Rwy	Routing	Altitude Restrict.
ABLAT 1D	33	Climb on 319° track to 1700', turn LEFT to PZ Lctr, intercept PZ Lctr outbound QDR 174 to Ablon Int.	Cross PZ Lctr at or above 3900'.
ABLAT 1E	15	Turn LEFT visually, proceed to PZ Lctr, then join SID from Rwy 33.	
ILB 1J	15	Turn LEFT visually, proceed to PZ Lctr, then join SID from Rwy 33.	
ILB 1K	33	Climb on 319° track to 1700', turn LEFT to PZ Lctr, intercept ILB R-256 inbound to ILB VOR/DME.	Cross D17 ILB at or above 4100'.
ROTAR 1J	15	Turn LEFT visually, proceed to PZ Lctr, then join SID from Rwy 33	
ROTAR 1K	33	Climb on 319° track to 1700', turn LEFT, 179° heading, at ILB R-251 turn RIGHT, intercept ILB R-249 to Rotar Int.	
VFR Dep	15	Turn LEFT visually, proceed to PZ Lctr, on 344° track visually via Vicky Int to RCH VORDME.	
	33	Climb on 344° track visually via Vicky Int to RCH VORDME.	